



Hermitage Way

Stanmore

£650,000

Davidson Frost-Wellings are pleased to present this three bedroom semi-detached house available chain free.

On the ground floor the house has a double reception room with a conservatory and a superb open plan kitchen, plus a shower room is also on the ground floor. Upstairs on the first floor the house has two double bedrooms, an additional single bedroom and a family bathroom.

This family home has potential to extend (SSTP)

Hermitage way is a popular road within the catchment area of two good schools: St Joseph's and Belmont School, and offers easy access to Belmont United Synagogue and Stanmore Golf Club.

Harrow Council Tax Band E

Viewing

Please contact our Davidson Frost-Wellings Office on 020 8954 8806 if you wish to arrange a viewing appointment for this property or require further information.

- Three bedrooms
- Two bathrooms
- Conservatory
- Great condition
- Off street parking
- Open plan kitchen



Floor Plan

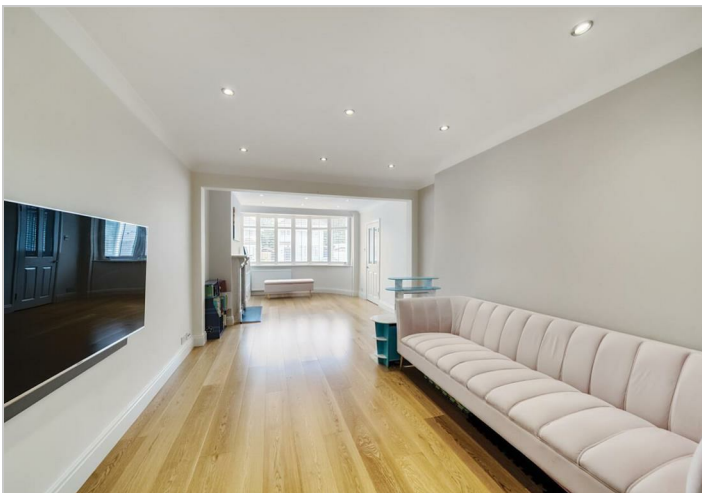


Area Map



Energy Efficiency Rating

	Current	Potential
Very energy efficient - lower running costs		
(92 plus) A		
(81-91) B		83
(69-80) C		
(55-68) D		
(39-54) E	48	
(21-38) F		
(1-20) G		
Not energy efficient - higher running costs		
England & Wales	EU Directive 2002/91/EC	



These particulars, whilst believed to be accurate are set out as a general outline only for guidance and do not constitute any part of an offer or contract. Intending purchasers should not rely on them as statements of representation of fact, but must satisfy themselves by inspection or otherwise as to their accuracy. No person in this firm's employment has the authority to make or give any representation or warranty in respect of the property.